

**S PT6i-S100.2 HEAVY DUTY PAN-TILT-UNIT "ROTOR HEAD"
 FOR MOBOTIX CAMERAS 7th and ONE Series PT6-S100**

Product number: 70004P00064
 Date: September 2024



FEATURES

This is the NEW HEAVY DUTY, MILITARY GRADE PT6S
 Due USB interface with RJ45Plug and 1,0m cable length „Plug&Play“

List of supported cameras :

S16, S74, MX M ONE S

The high-speed pan-tilt head features precision powerful 24VDC stepper motors. It needs no mechanical stops due to sliding contacts.

- programming of 4 different endless Tours
- 128 presets
- 4 different speeds
- IR- Head Light optical zoom 1-43° (optional)
- IR-Head light High power 30W (PT6iL)
- High Power White light 12W (optional)

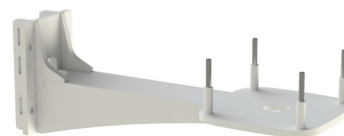
PTs are already integrated in to the *MX Multi Viewer*® and *MX Software*. As well as the *abp IP TECHVIEW*® So it is controllable by browser, software and Joystick

TECHNICAL SPECIFIKATION

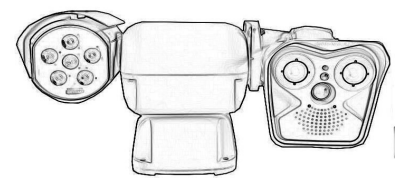
Warranty:	2 years
Positions:	128 fixed positions
Rotation:	pan +360°, tilt -90°-+90°
Usability:	indoor and outdoor IP66+
Construction:	cast aluminum, powder coat
Mounting accessories:	variety of accessories
Weatherproof:	to IP66+
Capacity:	8 kg / 17 pounds
Pan speed:	up to 90° per second
Tilt speed:	up to 70° per second
Power consumption:	12W Standby / 14W pan/tilt
Temperature range:	-40°C to +60°C -40 to +140 Fahrenheit
Humidity:	up to 95% (*)
Dimensions:	410x260x310x185mm
Packing size:	510x430x260 at 12kg
Camera core include	
Comes with power adapter (for the head and the camera),	

ACCESSORIES

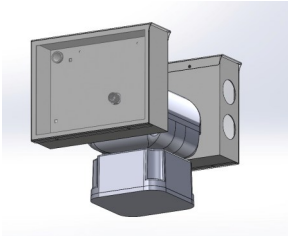
RS232 cable and holes for MOBOTIX cameras with flexible holder



Delivery without camera and bracket



Image



Technical Drawing Bracket

