



LAUNCH  
INFORMATION

# MOBOTIX NEWS - PRODUCTS & SOLUTIONS

## November 2024



- c71 Kepler NurseAssist Sensor: Extended Version (Software Upgrade)
- NurseAssist solution: Overview of Hardware and Software Modules
- GPSA Interface Box for MOBOTIX 7 and ONE
- Software Updates: VMS and Camera Firmware

# Table of Contents

---

1. [Webinar and Software updates](#)
2. [c71 Kepler NurseAssist Sensor: Extended Version \(Software Upgrade\)](#)
3. [NurseAssist Solution: Overview of Hardware and Software Modules, Whitepaper](#)
4. [GPSA Interface Box for MOBOTIX 7 and ONE](#)
5. [Software updates: VMS and camera firmware](#)
6. [Important Links](#)

**Notes:**

This document is intended exclusively for MOBOTIX partners for information and requirements planning purposes and may not be published in this form (digitally or as a printout) - Delivery only to commercial customers - Prices plus VAT ex works Langmeil, Germany - Subject to change without notice - MOBOTIX accepts no liability for technical errors, misprints or omissions - © MOBOTIX AG 2024 - MOBOTIX is a registered trademark of MOBOTIX AG in the European Union, the USA and other countries - All rights reserved.

MOBOTIX MSRP prices are recommended net prices ex works (EXW), ex works in Germany. In some countries, MOBOTIX dealers must set higher local sales prices due to import regulations/customs duties.

1.

# Webinars and Software Updates

## Invitation: Webinars on the NurseAssist solution incl. live demo (duration approx. 1 hour)

Take part in these MOBOTIX online events (in German and English) from anywhere with internet access and be one of the first to experience our latest products and solutions live and exclusively in action!

We look forward to your participation and your questions.



### Focus: Integration



#### English

08:30 AM & 04:00 PM CET

▶ [Register here](#)

#### Deutsch

14:00 MEZ

▶ [Hier registrieren](#)

### Focus: Applications



#### English

08:30 AM CET

▶ [Register here](#)

#### Deutsch

14:00 MEZ

▶ [Hier registrieren](#)

# MOBOTIX Campus Trainings: <https://www.mobotix.com/en/support/trainings/trainingcalendar>

## December 2024:

Day	Training	Language	Location	Registration link
02	World- Product Knowledge & Configuration of MOBOTIX Cameras (IoT/MOVE), Thermal Imaging and CLOUD Solutions	EN	Online (Training, 1 week, 90min per day)	<a href="https://www.mobotix.com/en/trainings/flash-2024">https://www.mobotix.com/en/trainings/flash-2024</a>
03	World- MOBOTIX solutions from the industry, energy, healthcare, retail sectors (Morning session)	EN	Online (Webinar)	<a href="https://www.mobotix.com/fr/node/19237">https://www.mobotix.com/fr/node/19237</a>
03	DE- MOBOTIX Lösungen aus den Bereichen Industrie, Energie, Gesundheitswesen, Einzelhandel	DE	Online (Webinar)	<a href="https://www.mobotix.com/fr/node/18978">https://www.mobotix.com/fr/node/18978</a>
03	World- MOBOTIX solutions from the industry, energy, healthcare, retail sectors (Afternoon session)	EN	Online (Webinar)	<a href="https://www.mobotix.com/fr/node/19255">https://www.mobotix.com/fr/node/19255</a>
09	World- Flash Advanced Confirmation & Application, Thermal & MOBOTIX CLOUD	EN	Online (Training, 1 week, 90min per day)	<a href="https://www.mobotix.com/en/trainings/flash-2024">https://www.mobotix.com/en/trainings/flash-2024</a>
10	DE-Grundkurs Videosicherheitstechnik	DE	Classroom training	<a href="https://www.mobotix.com/fr/node/19007">https://www.mobotix.com/fr/node/19007</a>
12	DE- Aufbaukurs 1 Videosicherheitstechnik	DE	Classroom training	<a href="https://www.mobotix.com/fr/node/19008">https://www.mobotix.com/fr/node/19008</a>
17	DE- Aufbaukurs 2 Videosicherheitstechnik	DE	Classroom training	<a href="https://www.mobotix.com/fr/node/19009">https://www.mobotix.com/fr/node/19009</a>
18	DE- VdS Brandfrüherkennung	DE	Classroom Training	<a href="https://www.mobotix.com/fr/node/19010">https://www.mobotix.com/fr/node/19010</a>

# MOBOTIX eCampus

## Online courses (eCampus): <https://mobotix-ecampus.com>

With eCampus, MOBOTIX offers you a complete e-learning platform. This allows you to decide when and where you want to view and edit training content. Simply open the page in your browser and select the training you want.

### What's new?

- Improved eCampus page layout with graphical user guidance
- Page language can be switched at any time (currently: DE and EN)
- Storage and retrieval of your previously acquired training certificates
- Learning Profile: Storage of the training courses you have already completed

### ➤ Do you already have personal access to our eCampus portal?

Then simply register here: <https://mobotix-ecampus.com>

### ➤ Don't have access data yet and want to take a look at eCampus first?

With the guest account (user name: **gast**, password: **mobotix**) you can also log in here and get an initial overview: <https://mobotix-ecampus.com>

### ➤ Would you like to receive personal eCampus access?

Then simply apply here: <https://www.mobotix.com/en/eCampus/request-access>

The screenshot displays the MOBOTIX eCampus interface. At the top, there is a navigation bar with links for 'My Training', 'Catalog', 'Learning Profile', 'Contact', and 'Gerwin Müller'. Below the navigation is a large banner image of a city at night. A search bar is located in the top right corner. The main content area features a grid of course thumbnails, each with a title and a representative image. The thumbnails include: 'Product Announcements' (colorful explosion), 'Solutions & Portfolio' (network diagram), 'MOBOTIX 7' (city skyline), 'MOBOTIX 6' (robot head), 'MOBOTIX MOVE' (cameras), 'MOBOTIX Thermal Imaging' (thermal person), 'MOBOTIX Door Station' (door panel), 'MOBOTIX MxManagementCenter' (software interface), 'MOBOTIX HUB' (laptop with thermal image), and 'Basics' (cable). An overlay window titled 'Learning profile' is open, showing a progress chart and a table of completed learning units. The chart indicates that 11% of the units are completed. The table lists various categories and their corresponding learning unit counts.

Category	Learning units
Without category	1,15
For Employees Only	1,23
Solutions & Portfolio	5,21
MOBOTIX MxManagementCenter	0,3
MOBOTIX Door Station	0,9
MOBOTIX 6	2,18
MOBOTIX Thermal Imaging	2,5
Basics	2,2
Product Announcements	0,14
MOBOTIX Camera Apps	0,16
MOBOTIX TOOLS	2,2
MOBOTIX CLOUD	1,4
MOBOTIX HUB	0,2

# Current software updates: Overview

## Updates 2024

### 2024:

- November 25: [MX-System Release 7.3.5.22](#)
- November 22: [MOBOTIX HUB Plug-Ins 2024-11-22](#); [MOBOTIX HUB Security + Bugfix Patches 2024-11-22](#)
- October 24: [MX-System Release 5.4.9.9-r1](#)
- October 18: [MX-System Release 7.3.4.23-r3](#)
- October 02: [MOBOTIX Live App 2.7.3 iOS Version](#)
- September 23: [MOBOTIX HUB DriverInstaller 133a](#)
- September 23: [MOBOTIX HUB Plug-Ins 2024-09-23](#)
- September 20: [MOBOTIX HUB 2024 R1](#)
- September 13: [MxMOVE Release mb20240830NX](#), [MxMOVE Release mb20240829TU](#), [MxMOVE Release mb20240823UX\\_8G\\_ALPR](#), [MxMOVE Release mb20240823UX](#), [MxMOVE Release mb20240816YX](#), [MxMOVE Release mb20240816SX](#), [MxMOVE Release mb20240816BX](#)
- September 09: [MX-System Release 8.0.0.94](#)
- August 14: [MxMOVE NVR Release mb20240624NVR64](#)
- August 14: [MxMOVE NVR Release mb20240624NVR816](#)
- July 29: [MxManagementCenter Release 2.9](#)
- July 26: [MOBOTIX Live App 2.7.2f102 Andoid Version](#)
- July 19: [MOBOTIX HUB Plug-Ins 2024-07-19](#)
- July 19: [MOBOTIX HUB Plug-Ins 2024-07-19 for Milestone XProtect](#)
- June 17: [MX-System Release 4.7.3.11-r6](#)
- June 17: [MX-System Release 5.4.9.4-r3](#)
- June 07: [MOBOTIX SYNC 1.0.1](#)

## Note on MOBOTIX software updates

Electronic systems also need to be updated from time to time to ensure that they function optimally. Here you should not hesitate. Here are four good reasons why you should always consider updating your software:

1. **Closing security gaps:** Security is the most important reason for updating software immediately.
2. **New functions:** New functions can be added by installing updates. Technology is constantly changing and updates offer the latest features and improvements.
3. **Improving performance:** Not all software updates are security-related, but contribute to improving the performance of the software.
4. **Ensure compatibility:** Without updates, older video systems may not be able to work with newer video management systems, for example.

Click here to go to the software download area on the MOBOTIX website:

<https://www.mobotix.com/en/software-downloads>

2.

## **c71 Kepler NurseAssist Sensor: Extended Version (Software Upgrade)**





## 2. MOBOTIX c71 Kepler NurseAssist Sensor - Extended License (Software Upgrade)



Intelligent 360° room sensor for automatic fall detection:

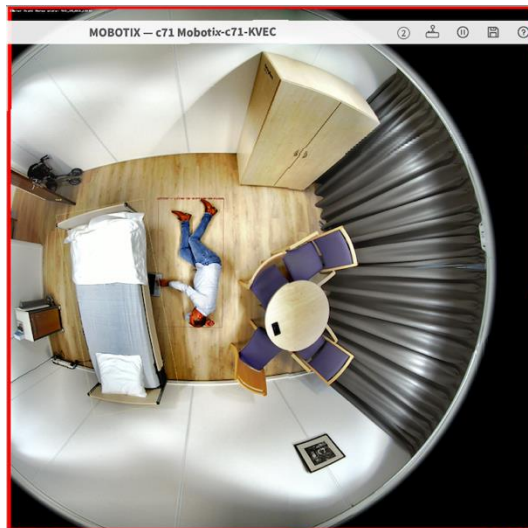
- For personnel relief
- For the safety of residents
- For simple integration into call systems



Falls that are detected too late and leaving the bed or room at night can be avoided. The intelligent **MOBOTIX c71 Kepler NurseAssist** sensor technology supports nursing and retirement homes in particular in protecting residents effectively and cost-effectively - automatically around the clock.

The **MOBOTIX c71 Kepler NurseAssist** solution consists of a hemispheric c71 camera to be mounted on the ceiling in the resident's single room or care room with a seamless 360° all-round view. However, the c71 does not function as a surveillance camera, but as a highly accurate smart sensor (>99% reliability) with a pre-installed, AI-based Kepler NurseAssist Healthcare app.

This innovative healthcare application, which is particularly easy to implement in nurse call systems and in MOBOTIX HUB or Milestone XProtect thanks to standard network technology, is the result of a cooperation between MOBOTIX and the Dutch company [Kepler Vision Technologies](https://www.kepler-vision.com/), which specializes in AI-based software solutions in healthcare and nursing and has earned an excellent reputation in the industry.



## 2. MOBOTIX c71 Kepler NurseAssist Smart Sensor - Extended License (Software Upgrade)



### Now optionally available: MOBOTIX c71 Kepler NurseAssist with new Extended License

We are pleased to announce the functional expansion of the MOBOTIX c71 Kepler NurseAssist system with the new Extended License. This optional add-on license provides nursing homes, hospitals and other healthcare facilities with even more comprehensive monitoring and security capabilities. The additional status and alarm notifications enable proactive monitoring of residents and significantly improve the responsiveness of care staff. Falls and other serious subsequent events can thus be avoided in advance.

- **Person sitting on the edge of the bed:** Detects and reports when a person is on the edge of the bed - a potential indicator of an imminent fall or problems, especially for residents with dementia. In the event of an alarm message, auxiliary lighting in the room can be switched on directly via the I/O function of the c71 Kepler NurseAssist Smart Sensor or via a network message (person sits on the edge of the bed > light goes on, person then lies back in bed > light goes off again) for greater comfort and safety.
- **Leave/enter room:** Monitors whether a person leaves or enters the room, which is particularly important for people with dementia. The alarm can be individually restricted to certain times and days (e.g. only at night).
- **Entering/leaving the bathroom:** Alerts staff if a person enters the bathroom and does not leave for a longer period of time, which enables immediate action in critical situations and can thus prevent possible emergencies. The alarm can be individually restricted to certain times and days (e.g. only ever at night).
- **Person lying/sitting on the floor:** Distinguishes precisely in the alarm message whether a person is sitting or lying on the floor in order to provide care staff with accurate information. For example, sitting on the floor can be an indicator of an approaching heart attack, which can be relevant for prioritizing simultaneous alarms.
- **Bed not detected:** Sends an alarm if the bed has been removed from the room or if, for example, the c71 sensor is/was covered (active manipulation). Repositioning/moving the bed in the room is not a problem due to the intelligent automatic bed detection of the c71 and does not trigger an alarm. Recalibration as with other sensor types is also not necessary if the bed is moved.



## 2. MOBOTIX c71 Kepler NurseAssist Smart Sensor - Web interface without extended license

MOBOTIX



← c71 mx10-32-204-41 Kepler NurseAssist Settings ? ⓘ + -

### Kepler NurseAssist

Assist mode	Client room: Fall Detection + In-Bed Monitoring	NurseAssist mode.
Extended functions (+)	<input type="checkbox"/>	Enables NurseAssist Extended functionalities.
Show object detections	<input checked="" type="checkbox"/>	Enable overlay with outline and text for persons and bed.
<b>Notifications</b>		
Fall detected	<input checked="" type="checkbox"/>	Enables fall-detected notifications.
Fall detected - duration	20 seconds	Sends a notification of fall-detected event after the state has been observed for this number of seconds.
Not in bed	<input checked="" type="checkbox"/>	Enables notification when person leaves the bed.
In bed	<input checked="" type="checkbox"/>	Enables notification when person starts lying in the bed.
In bed/not in bed - duration	30 seconds	Sends a notification of bed events after the state has been observed for this number of seconds.
<b>MOBOTIX HUB Analytic Event</b>		
Enable	<input type="checkbox"/>	Enables analytic event reporting.
<b>Advanced</b>		
Dynamic bed masking	<input checked="" type="checkbox"/>	Enable dynamic bed masking: the bed area is masked when there is a person in the bed.
Ignore areas	<input type="checkbox"/>	Define multiple ignore areas as polygons. To add an extra polygon, press the Plus button.  To change the area of a polygon, press the "Edit Polygon" button. You can draw a polygon in the camera image with the mouse. The corners are moved using the large handles. New corners can be inserted by dragging on the smaller handles. Confirm the polygon with the check mark in the upper right corner of the camera image.



Fig.: Web interface of the c71 Kepler NurseAssist with analyses that can be used as standard:

- Person in the room has fallen or is sitting on the floor
- Person is not in bed
- Person is in bed
- GDPR-compliant operation thanks to event-controlled masking of live and recorded images
- New: Dynamic bed masking (person in bed remains invisible when looking into the room)

## 2. MOBOTIX c71 Kepler NurseAssist Smart Sensor - Web interface with extended license



Fig.: Web interface of the c71 Kepler NurseAssist with activated extended license and all available functions

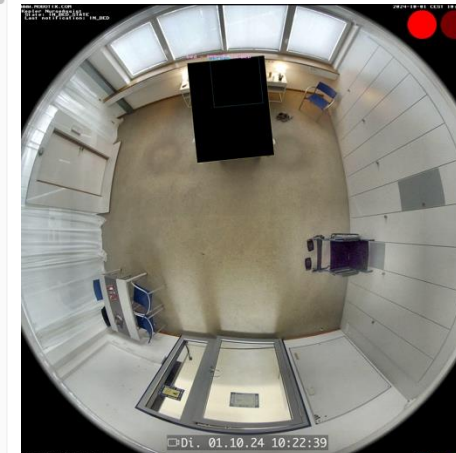
[+] Only available with extended license

### System requirements

The MOBOTIX c71 NurseAssist Extended license is now available and can be used together with all c71 Kepler NurseAssist sensors from camera firmware **7.3.5.22** for 30 days free of charge for test purposes.

➤ [Firmware 7.3.5.22: Details & Download](#)

In addition to a 30-day extended license demo version, a firmware update also includes the new standard function of **dynamic masking** of the occupied bed only - to protect privacy while providing an overview of the room.



## 2. MOBOTIX c71 Kepler NurseAssist Smart Sensor - Advantages



### The MOBOTIX c71 Kepler NurseAssist Smart Sensor offers decisive advantages:

- **Increased security:** Precise monitoring and immediate alarms allow critical incidents to be detected and escalated more quickly.
- **Increased efficiency in day-to-day care:** care staff are relieved by automatic notifications and can intervene in a more targeted manner.
- **Personalized care:** Thanks to the extended status messages, care can be individually tailored to the patient's needs.
- **Future-proof and expandable:** Integration with existing nurse call systems and the option of integrating other MOBOTIX products make the system flexible and adaptable to future requirements.
- **5-year guarantee** on the high-quality hardware and software combination, which is designed to be extremely durable and maintenance-free
- **Intercom** possible via integrated high quality audio function.
- **Easy installation and maintenance** of the system, as no additional computer or data server is required for existing nurse call systems.
- Multi-level **data protection concept** - all alarm functions are also available without display, transmission or recording of video and audio data.
- **Optical sensor with seamless 360° all-round view** and intelligent bed detection: only one Smart Sensor required per resident's room, position of the bed can be changed at any time (no recalibration necessary).
- **More reliable, more efficient and more functional than conventional fall sensors** (e.g. radar or touch sensors, wristbands or smartwatches).

## 2. MOBOTIX c71 Kepler NurseAssist Smart Sensor - Ordering information

Order information		MSRP price*
Model name Order number	Description	
c71 Kepler NurseAssist Smart Sensor Mx-c71A-NurseAssist	<b>MOBOTIX c71 NurseAssist Sensor</b> (powered by Kepler Vision Technologies) with the following functions: Monitoring the well-being of patients in private rooms, corridors and common areas of healthcare facilities - Minimization of response times through decentralized fall detection - Prevention of accidents caused by the events: person on the floor (sitting or lying), person in bed and person out of bed - Simple and discreet installation - GDPR-compliant operation through event-controlled masking of live and recorded images - An <b>"Extended Kepler NurseAssist App demo license" is integrated free of charge in the firmware from version 7.3.5.x and can be activated there for 30 days.</b>	Prices on request
<b>NEW:</b> Plug-in license function extension of the c71 Kepler NurseAssist App Mx-APP-KEP-NUA-EXT	<b>Extended Kepler NurseAssist App license</b> that adds the following features to the NurseAssist status and alarm notifications: Person is sitting on the edge of the bed - Person has left the room - Person has entered the room - Person has entered the bathroom / is in the bathroom - Bed is not detected / is not present - Distinction between person lying and sitting on the floor - IMPORTANT: Requires MOBOTIX c71 NurseAssist Smart Sensor (incl. Kepler NurseAssist Certified App)	



The MOBOTIX c71 NurseAssist Extended license is now available and can be used with all c71 Kepler NurseAssist sensors **with camera firmware 7.3.5.22** or higher. An update of the firmware also extends the standard version with the new "Dynamic Masking" function and provides access to the 30-day extended demo license. On request, the MOBOTIX Sales Team can also provide you with a 90-day trial license for the Extended App for specific projects.

- **Update to firmware 7.3.5.22: [Details & Download](#)**
- **Technical documentation and further information on c71 Kepler Nurse Assist: <https://www.mobotix.com/de/mobotix-c71-nurseassist>**

\*MOBOTIX MSRP prices are recommended net sales prices Ex Works (EXW), ex works in Germany. In some countries, MOBOTIX distributors have to set higher local sales prices due to import regulations/customs duties.



3.

**NurseAssist Solution:  
Overview of Hardware and Software Modules  
Whitepaper**

### 3. Kepler NurseAssist solution: Overview of hardware and software modules

**c71 NurseAssist Smart Sensor**  
Superior fall detection solution



**MOBOTIX c71 Kepler NurseAssist Smart Sensor**

incl. Kepler NurseAssist App (Standard) & Extended Demo (30 days)  
Mx-c71A-NurseAssist

**Kepler NurseAssist Extended License**  
Additional prevention alarms



**Kepler NurseAssist Extended Plug-in software license**

Mx-APP-KEP-NUA-EXT

**MOBOTIX HUB Nurse Call & Reporting Software**



**MOBOTIX HUB VMS (from L2) with NurseAssist Dashboard Plug-In**

**Status tableau and activity report** with time, duration and frequency of events - **For up to 48 c71 Smart Sensors required:** 1x standard Windows PC (min. 16 GB RAM & 256 GB HDD), 1x MOBOTIX HUB L2 Base license (Mx-HUB-L2-BAS), 1x device license per c71 Smart Sensor (Mx-HUB-L2-DEV)

**Integration** into external or existing nurse call/alarm management system



Easy installation and integration of the c71 Smart Sensor into standard systems (e.g. IQ Messenger, Skyresponse) and individual platform solutions thanks to IP technology (MQTT/API).

More information here:

<https://www.mobotix.com/en/mobotix-c71-nurseassist#integration>



### 3. NurseAssist solution: c71 Kepler NurseAssist Smart Sensor



Technical data of the hardware (MOBOTIX c71)	
Image sensor	4K (1:1) effective max. resolution 2144x2144
Light sensitivity	Day mode (color): 0.1 lx @ 1/60 s; 0.005 lx @ 1 s Night mode (B/W): 0.02 lx @ 1/60 s; 0.001 lx @ 1 s
IP protection class	IP40
Operating temperature range	-10 to 50 °C / -14 to 122 °F
Internal DVR, ready for immediate use	MicroSD card (8 GB), MxPEG+ recording only
Microphone / Loudspeaker	Yes
Shock detector (tamper detection)	Yes
Integrated IR lighting (LED)	Yes
Power consumption	Average power consumption: 12.2 W; Max. power consumption: 25 W Power consumption: 25 W
Electrical overvoltage protection	Available with MX-Overvoltage-Protection-Box (not included)
PoE standard	PoE Plus (802.3at-2009)/Class 4 (Class 3 can be activated via HW switch. Note: IR lighting requires class 4)
Interfaces	Ethernet 1000BaseT (RJ45 according to EIA/TIA-568B) USB-C/USB2.0; high speed (Vout = 5.1 V, Iout = 0.9 A, Pout = 4.5 W)
Mounting options	Ceiling bracket
Dimensions (Ø x height)	164 x 47.5 mm
Gross weight	1.040 g
Housing	Aluminum, PBT-GF30
Certificates	EN 50121-4, EN 55032, EN 55035, EN 61000-6-1, EN 61000-6-2, EN 61000-6-3, EN 61000-6-4, EN 62368-1, EN 63000, AS/NZS CISPR32, 47 CFR Part 15b
Protocols	DHCP (client and server), DNS, ICMP, IGMP v3, IPv4, IPv6, HTTP, HTTPS, FTP, FTPS, MQTT, NFS, NTP (client and server), RTP, RTCP, RTSP, SFTP, SIP (client and server), SMB/CIFS, SNMP, SMTP, SSL/TLS 1.3, TCP, UDP, VLAN, VPN, XML, Zero conf/mDNS
Manufacturer's warranty	5 years

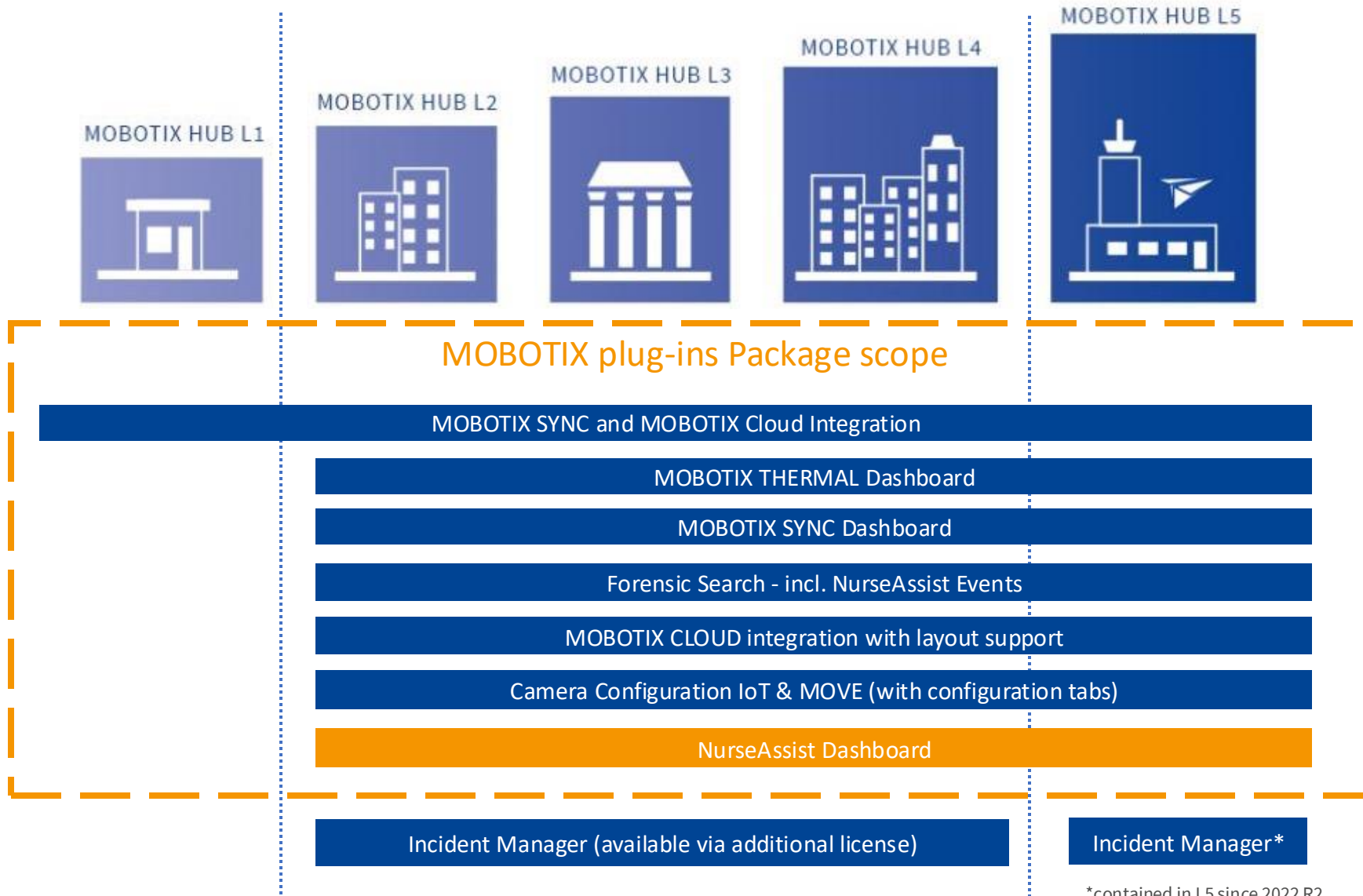
### 3. NurseAssist solution: c71 Kepler NurseAssist Smart Sensor



#### Technical information on the MOBOTIX c71 NurseAssist solution

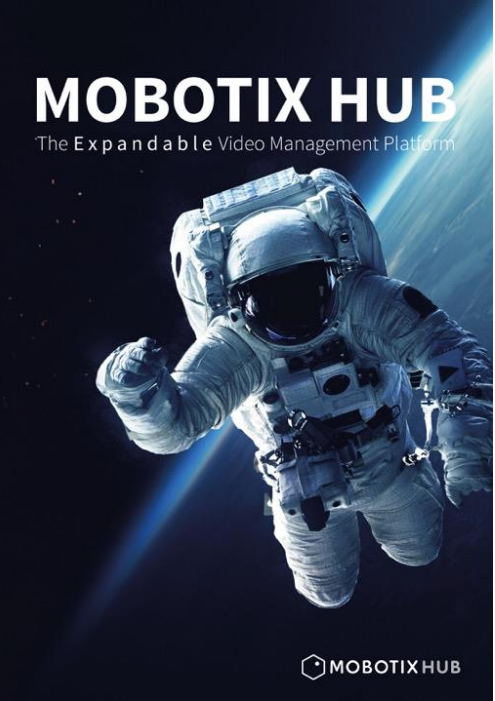
<b>Functions of the NurseAssist software</b>	<ul style="list-style-type: none"><li>• Monitoring the well-being of patients in private rooms, corridors and communal areas of healthcare facilities</li><li>• Minimization of response times thanks to decentralized, state-of-the-art fall detection</li><li>• Accident prevention through the events Person on the floor, person sitting on the edge of the bed, person in bed and in the bathroom, person out of bed and room, no more bed detected in the room</li><li>• Simple installation (ceiling-mounted only, connection and power supply via PoE network cable)</li><li>• GDPR-compliant operation thanks to event-controlled blackout of live and recorded images</li></ul>
<b>Image formats, frame rates, image storage</b>	<ul style="list-style-type: none"><li>• Video codecs: MxPEG+, H.265, H.265, MJPEG</li><li>• Max. Image resolution: 4K (1:1) effective max. resolution 2144x2144 hemispherical image</li><li>• Max. frame rate (fps): Typ. 12 fps with NurseAssist software activated</li><li>• Simple installation</li><li>• GDPR-compliant operation thanks to event-controlled blackout of live and recorded images</li></ul>
<b>ONVIF compatibility</b>	<ul style="list-style-type: none"><li>• Profile G,S, T</li></ul>
<b>Further video analysis tools (pre-installed)</b>	Video Motion, MxActivitySensor, MxAnalytics (heat maps, people counting)
<b>Integration into external nurse call systems (remote alarm notification)</b>	Via software API, e-mail, MQTT, MxMessageSystem (for integration in <a href="#">IQ Messenger</a> ), network message (HTTP/HTTPS), SNMP, XML
<b>Integration in video management software (VMS)</b>	<ul style="list-style-type: none"><li>• MOBOTIX HUB with NurseAssist Dashboard Plug-In, min. HUB license level 2</li><li>• MxManagementCenter: Min. version 2.7.x, Advanced Config license required for camera configuration, Event Search: Smart Data license included</li><li>• MOBOTIX CLOUD: Streaming and events supported</li><li>• MOBOTIX Live App: Streaming and events supported</li><li>• 3rd Party VMS: see specification of ONVIF profiles S, T and G</li></ul>

### 3. NurseAssist solution: MOBOTIX HUB as Nurse Call & Reporting System



**THE MOST IMPORTANT THING:**

- From HUB L2, the MOBOTIX plug-ins can be used for the c71 NurseAssist solution
- The Plug-In Package is **always free of charge** for MOBOTIX HUB customers



\*contained in L5 since 2022 R2

### 3. NurseAssist solution: Why MOBOTIX HUB and NurseAssist Dashboard?

Care facilities that do not yet have an existing Nurse Call system can benefit significantly from the flexible MOBOTIX HUB solution with the NurseAssist Dashboard plug-in. This solution not only provides a central monitoring and management platform, but also enables easy expansion to include a complete video surveillance and access system.

#### Advantages of the MOBOTIX HUB solution for facilities without a nurse call system:

- 1. Central control and overview:** The MOBOTIX HUB solution acts as a central platform that brings together all alarms and activities in a single user interface. The NurseAssist Dashboard plug-in enables nursing staff to monitor all relevant information in real time and react immediately to critical situations. This is particularly beneficial for facilities that do not yet have an existing patient monitoring infrastructure.
- 2. Activity Report:** A significant advantage of the MOBOTIX HUB solution is the additional integrated possibility of recognizing behavioral patterns over a longer period of time thanks to the statistical display, which allows valuable conclusions to be drawn about the patient's recovery process.
- 3. Data protection compliant:** Privacy and data protection are paramount: a live image is not required, and if visual monitoring is necessary, this can be carried out in compliance with data protection regulations by using a blur slider and a logbook. The system also supports the seamless documentation of patient information to ensure a smooth transition during shift changes.
- 4. Scalable solution:** The MOBOTIX HUB platform is fully scalable. New functions and technologies such as the NurseAssist system can be added effortlessly to meet the growing requirements of the care facility. The platform remains flexible and can be expanded at any time to include security solutions such as video surveillance or access control.
- 5. Expandability with security cameras and access control systems:** Another advantage of the MOBOTIX HUB solution is the simple integration of classic video surveillance and access control systems. This allows care facilities not only to strengthen the security aspect for residents and staff, but also to optimize control over access areas. The seamless combination of healthcare and security systems provides a comprehensive solution that goes beyond mere patient monitoring.



### 3. NurseAssist solution: Why MOBOTIX HUB and NurseAssist Dashboard?

#### Additional functions through the NurseAssist Dashboard plug-in

The NurseAssist Dashboard plug-in offers an intuitive user interface that has been specially developed for nursing care. Care facilities benefit from precise and fast alarm transmission, which significantly reduces the burden on nursing staff in their daily work. Thanks to the integration into the MOBOTIX HUB platform, alarm messages and status reports can be displayed in real time on various end devices, which significantly shortens the response time.

For care facilities without an existing nurse call system, the MOBOTIX HUB solution together with the NurseAssist Dashboard plug-in offers a comprehensive, flexible and expandable platform. It not only enables efficient patient monitoring, but can also be easily expanded to include classic security solutions. This makes the MOBOTIX HUB solution a future-proof investment for care facilities looking to improve both safety and quality of care.

More information about MOBOTIX HUB and our other MOBOTIX VMS solutions plus a practical **VMS Navigator** can be found here:

<https://www.mobotix.com/en/software/vms>



**VMS NAVIGATOR**



# Whitepaper: The benefits of the MOBOTIX Kepler NurseAssist solution for care facilities

*The shortage of qualified nursing staff and the increasing demands on the safety and quality of care are just some of the factors forcing facilities to look for innovative technologies. The MOBOTIX NurseAssist solution, in particular the c71 Kepler NurseAssist Smart Sensor, offers a groundbreaking answer to these challenges. It enables intelligent, video-based monitoring that not only reacts to acute emergency situations, but also takes preventative action. This white paper highlights the key benefits of the MOBOTIX NurseAssist solution for care facilities, shows the outstanding features compared to other technologies and explains the simple integration into existing external nurse call systems.*

- **Fall prevention and detection:** Falls are one of the most frequent and dangerous incidents in care facilities. The c71 Kepler NurseAssist Smart Sensor not only optimizes the detection of falls, but also works preventively. The system can analyze movement patterns and alerts the nursing staff. Other technologies, such as pressure mats or traditional alarm buttons, only react after the fall or when the person concerned triggers an alarm. In contrast, the video-based solution from MOBOTIX offers continuous monitoring without the patient having to take action themselves. This reduces the risk of falls going unnoticed.
- **Comprehensive anomaly detection:** In addition to fall detection, the c71 NurseAssist can also detect behavioral anomalies. Long stays in the bathroom or leaving the room can indicate potential health problems. The Extended License features enable the system to detect even subtle changes in behavior, such as sitting on the edge of the bed in the middle of the night, which could indicate confusion or disorientation. Such early warnings help care staff to react more quickly and in a more targeted manner before a potentially harmless situation turns into a serious incident. Other systems, such as motion detectors or simple sensors, do not offer such detailed analysis and often overlook critical changes in behavior.
- **Relief for nursing staff:** Nursing staff are under enormous pressure every day to care for a large number of patients. MOBOTIX NurseAssist takes the pressure off staff by providing automatic notifications and detailed information on patient activity. The system continuously monitors and informs staff as required, significantly reducing their workload. This automated monitoring ensures that nursing staff can focus on the individual needs of residents instead of routine monitoring.



# Whitepaper: The benefits of the MOBOTIX Kepler NurseAssist solution for care facilities

## Advantages over other technologies

- **Compared to traditional systems:** Most traditional systems such as emergency buttons, pressure mats or radar-based technologies often only offer reactive solutions. The patient must either trigger the alarm themselves or there must be direct contact, as with a pressure mat, to trigger the alarm. These systems offer little context and do not capture detailed information about the patient's condition. In contrast, the MOBOTIX NurseAssist system enables proactive monitoring through the use of artificial intelligence. It recognizes early on if there is a risk and warns the nursing staff. Thanks to video monitoring, not only can falls be recorded, but patterns that indicate health problems, such as restlessness or unusually long stays in the bathroom, can also be detected. This advanced analysis ensures more precise and faster intervention.
- **Integration of artificial intelligence:** The use of AI in the MOBOTIX NurseAssist solution offers enormous advantages over conventional solutions. Through machine learning, the system can analyze the behavior of residents and adapt over time. For example, it can identify repeated, inconspicuous patterns of behavior that may indicate an increasing risk of falls. This differs significantly from pressure mats or motion detectors, which only react if the incident has already happened.
- **Privacy and ethical use:** While video surveillance in care is often considered critical, MOBOTIX has built in strong privacy and ethical use measures. The system is HIPAA compliant and offers features such as privacy masking so that residents' privacy remains protected. While radar or pressure sensors also offer privacy benefits, they do not provide the comprehensive information needed to provide efficient care.

# Whitepaper: The benefits of the MOBOTIX Kepler NurseAssist solution for care facilities

## Simple integration into external nurse call systems

A key benefit of the c71 Kepler NurseAssist Smart Sensor is its seamless integration with existing external nurse call systems. Many care facilities already use established communication systems, and MOBOTIX has made it its mission to support these systems rather than replace them.

- **API integration and compatibility:** The c71 Smart Sensor offers REST API integration, which enables simple and standardized communication with other systems. This allows care facilities to integrate the MOBOTIX NurseAssist system into existing platforms with minimal effort. The system's open architecture ensures that it works with market-leading providers such as Ascom, IQ Messenger or Skyresponse. This flexibility allows facilities to utilize their existing infrastructure while benefiting from the NurseAssist system's innovative monitoring capabilities. Other technologies, such as pure video surveillance solutions or motion detectors, rarely offer such deep and seamless integration.
- **Central control and monitoring:** Thanks to integration with external systems, care staff can view all relevant information, such as status messages or alarm notifications, on a central dashboard. This centralized control increases efficiency and provides a complete overview of all ongoing monitoring, which is rarely the case with other technologies. In addition, alarm messages can be transmitted directly to care staff's mobile devices to further reduce response times.
- **Scalability and adaptability:** The integration of the MOBOTIX NurseAssist sensor offers care facilities the possibility to easily scale and adapt their monitoring systems. New sensors can be easily added, and the addition of extra features such as the Extended License ensures that the system can meet all requirements in the long term.

**Conclusion:** The MOBOTIX NurseAssist solution, in particular the c71 Kepler NurseAssist Smart Sensor, offers care facilities a comprehensive, preventive and intelligent solution for patient monitoring. Compared to other technologies, it offers proactive monitoring, built-in artificial intelligence and seamless integration with existing nurse call systems. Thanks to the additional functions of the extended license, potential incidents such as falls or critical situations can be detected at an early stage and prevented altogether. Care facilities that rely on innovative and scalable solutions will find MOBOTIX NurseAssist to be a technology that significantly improves both the quality of care and the efficiency of staff.



4.

# GPSA Interface Box for MOBOTIX 7 and ONE

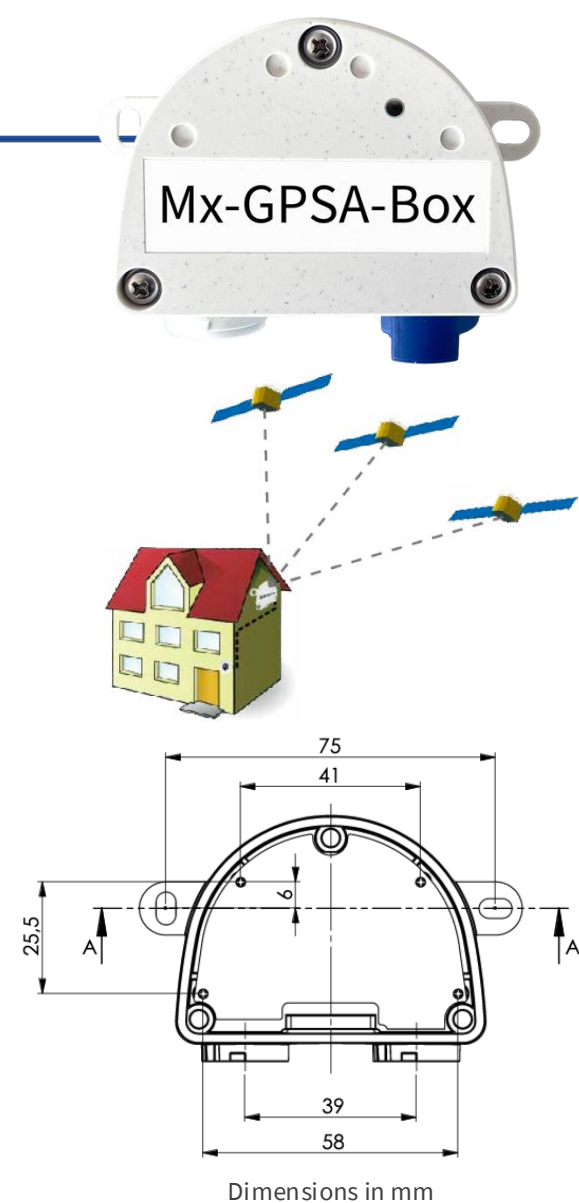
## 4. GPSA interface box for MOBOTIX 7 and ONE

### Interface boxes for MOBOTIX 7 and MOBOTIX ONE cameras (S74, M73, Q71, D71, p71, v71, c71, ONE M1A-S)

Since the cameras of the MOBOTIX 7 and MOBOTIX ONE platforms no longer have the older MxBUS connection of the predecessor series, MOBOTIX now also offers a GPS box compatible with these camera platforms - following the Mx-4IO box and NPAA box available since March 2024. The extremely compact and weatherproof housing design of the interface boxes first introduced in 2012 remains unchanged. The MOBOTIX interface boxes increase the benefits of an entire video system, even in the simplest installation case.

As a **time server**, the **Mx-GPSA box** provides the exact system time for one or more integrated cameras and an alarm if **the position changes** or **a predefined speed is exceeded**. The box is powered and integrated (power consumption less than one watt) via the camera to which the box is connected via USB cable (MOBOTIX USB cables are not included and must be ordered separately). The box is configured via the camera software in a browser (accessible via the IP address of the camera <http://<camera IP address>> and administration rights).

- The MOBOTIX Mx-GPSA-Box is only to be used for the provision of sensor data (time base/GPS position/speed) for MOBOTIX cameras in IP66 environments.
- Compatible with all cameras on the MOBOTIX ONE and MOBOTIX 7 platforms from software version MX-V7.3.4.23.
- The accuracy of the GPS data changes due to external factors (e.g. number of satellites currently being received, weather).
- Ensure that you comply with all relevant laws and regulations and that you meet all certification requirements for the intended use.
- To ensure optimum reception of the GPS signals by the Mx-GPSA-Box, you should look for an installation location outside the building that allows an open view of the sky.
- Reception sensitivity: -180 dBm
- The total length of the USB cable of 5 m/16.4 ft must not be exceeded.



## 4. GPSA interface box for MOBOTIX 7 and ONE - Ordering information

The current GPSA box with USB-C connection (instead of MxBUS) can be connected directly to any MOBOTIX 7 and ONE camera using an additional MOBOTIX cable. Please note that a USB-C/MiniUSB cable **Mx-CBL-MUC-MU-x** must be used to connect to an **M73**, but a MOBOTIX sensor cable **Mx-A-S7A-CBL02/03\*\*** must be used for the other MOBOTIX 7 cameras and the **ONE M1A-S**. When using standard USB cables (without a MOBOTIX-specific sealing ring) or a corresponding sealing measure, the weather resistance of the connection is no longer guaranteed. The PDF document **Mx\_QI\_Mx-GPSA-Box (quick installation/technical specifications)** is available in 4 languages: [DE](#) - [EN](#) - [FR](#) - [ES](#)

Order information Camera		MSRP price*
Model name Order number	Description	
GPSA box for MOBOTIX 7/ONE Mx-F-GPSA	Weatherproof GPS timer for MOBOTIX 7 and MOBOTIX ONE cameras - Support for GPS and Glonass - Connection to the camera via USB-C - Protection class IP66/IK08, -30 to 60 °C	Prices on request
USB-C/MiniUSB cable, 1 m Mx-CBL-MUC-MU-1	USB-C straight > MiniUSB straight - Length 1 m/3.3 ft - For connecting the GPSA and 4IO box to the <b>M73</b> camera and for connecting the RS232 IO box (MX-OPT-RS1-EXT) to the S74	
USB-C/MiniUSB cable, 5 m Mx-CBL-MUC-MU-5	USB-C straight > MiniUSB straight - Length 5 m/16.4 ft - For connecting the GPSA and 4IO box to the <b>M73</b> camera and for connecting the RS232 IO box (MX-OPT-RS1-EXT) to the S74	
Sensor cable, 2 m Mx-A-S7A-CBL02	Sensor cable straight-straight, length 2 m/6.6 ft - For connecting the GPSA and 4IO box to the <b>M1A-S, S74, D71, Q71, c71, p71, v71</b> cameras and for connecting sensor modules to the S74	
Sensor cable, 3 m Mx-A-S7A-CBL03	Sensor cable straight-straight, length 3 m/9.9 ft - For connecting the GPSA and 4IO box to the <b>M1A-S, S74, D71, Q71, c71, p71, v71</b> cameras and for connecting sensor modules to the S74	

\*MOBOTIX MSRP prices are recommended net sales prices Ex Works (EXW), ex works in Germany. In some countries, MOBOTIX distributors have to set higher local sales prices due to import regulations/customs duties.

**\*\*No longer available from MOBOTIX with immediate effect (EoL):**

Sensor cable, 1 m Mx-A-S7A-CBL01	Sensor cable straight-straight, length 1 m/3.3 ft - For connecting the GPSA and 4IO box to the <b>M1A-S, S74, D71, Q71, c71, p71, v71</b> cameras and for connecting sensor modules to the S74
-------------------------------------	--



5.

# Software updates: VMS and camera firmware

## 5.1 MxManagementCenter 2.9 with extended Thermal Dashboard Plug-In



MxManagementCenter (MxMC) is a MOBOTIX VMS application for PC and MAC systems with a focus on simple and intuitive operation combined with maximum flexibility. MxMC 2.9 offers individual bug fixes and detailed improvements such as a new [project info page](#), access to the SD [card recordings](#) of some MOBOTIX MOVE cameras and extended e-mail notifications, e.g. for Health Check or Thermal Dashboard processes.

**Free download and release notes MxMC 2.9:** <https://www.mobotix.com/en/node/19551>

In MxMC 2.9, the **Thermal Dashboard function** (separate license) available from MxMC 2.8 has also been extended so that the recorded temperature values can be regularly sent to the user as a CSV by e-mail if the thermal threshold value is exceeded or for further processing.

**Thermal Dashboard plug-in (subject to license, 30-day demo license available free of charge):** The use of the Thermal Dashboard is subject to a fee and requires the purchase of a corresponding license. With the base license, the temperature data of up to four MOBOTIX thermal cameras (from M15/S15 Thermal up to M73/S74 Thermal) can be displayed in the dashboard. A device license is required for each additional thermal camera. Detailed information on MxMC and the available licenses can be found in the [MOBOTIX Community](#).

Ordering information Thermal Dashboard licenses for MxManagementCenter 2.9		
Model name Order number	Description	MSRP price*
Thermal Dashboard Base License for MxMC Mx-SW-MC-Th-DB-Bas	Activates the MOBOTIX Thermal Dashboard in the MxMC (from 2.8) and supports the MOBOTIX Thermal camera functions - Main applications are: - Live monitoring and monitoring of temperature-critical processes - Subsequent analysis of the temperature curve - Supports MOBOTIX P3, P6 and P7 thermal cameras - Restriction of the P3 to temperature graphs: no hot spot areas - License is activated via the MOBOTIX License Portal. - License is not transferable - One license per MxMC is required. - Thermal graphs of max. 4 thermal cameras can be integrated with one license - Additional thermal cameras require one MOBOTIX MxMC Device license per camera - Permanent license	Price on request
Thermal Dashboard Base Demo License Mx-SW-MC-Th-DB-Bas-30	<b>30-day demo license, available directly from MOBOTIX, please contact: <a href="mailto:vertrieb@mobotix.com">vertrieb@mobotix.com</a></b>	<b>0 EUR / 0 USD</b>
Thermal Dashboard Device License Mx-SW-MC-Th-DB-Dev	Activates an additional camera in the MxMC for the MOBOTIX Thermal Dashboard - Supports MOBOTIX Thermal cameras P3, P6 and P7 - Permanent license	Price on request

\*MOBOTIX MSRP prices are recommended net sales prices Ex Works (EXW), ex works in Germany. In some countries, MOBOTIX distributors have to set higher local sales prices due to import regulations/customs duties.

## 5.2 MOBOTIX HUB Release 2024 R1; Update for DriverInstaller & Plug-Ins

New!	MOBOTIX HUB	MOBOTIX HUB	MOBOTIX HUB	MOBOTIX HUB	MOBOTIX HUB
	L1	L2	L3	L4	L5
Management Client - Advance Service reminder	+	√	√	√	√
Desk Client - Combined media player format	√	√	√	√	√
Web Client - Timeline in full-screen mode	√	√	√	√	√
Mobile Client - Alarm support on Maps	-	-	-	√	√
Web & Mobile Client - Audit log of the logout system	√	√	√	√	√
Device Pack 13.3a	√	√	√	√	√



MOBOTIX delivers new MOBOTIX HUB releases with additional functions up to three times a year. Based on our licensing model, each new release requires the purchase of new software licenses. This does not apply to customers with [Advanced Service](#) licenses, who can obtain the updates **free of charge**.

The latest MOBOTIX HUB software update (Release 2024 R1) has been available from MOBOTIX since September 20, 2024 (Details & Download):

➤ **MOBOTIX HUB 2024 R1:** <https://www.mobotix.com/en/node/19668>

Also new are the HUB software add-on products DriverInstaller and Plug-Ins, which have been available free of charge since November 22, 2024 (Details & Download):

➤ **MOBOTIX HUB DriverInstaller 133a:** <https://www.mobotix.com/en/node/19671>

➤ **MOBOTIX HUB Plug-Ins 2024-11-22:** <https://www.mobotix.com/en/node/20422>

Further details and tips on MOBOTIX HUB and the latest releases can be found here:

➤ [MOBOTIX Community](#)

You can book MOBOTIX HUB training courses with a technical or sales focus online here:

➤ [Training calendar](#)

## 5.3 MOBOTIX MOVE Firmware Updates

### New software versions for MOBOTIX MOVE cameras

MOBOTIX currently offers seven software updates for the **MOVE product portfolio**. The software has been available on the MOBOTIX website since September 13, 2024 with detailed descriptions and release notes are available for **free download**.



#### MOBOTIX MOVE Cameras - Release Notes & Software Downloads:

1. [MxMOVE Release mb20240816BX](#) (Mx-VM1A-20-IR-VA)
2. [MxMOVE Release mb20240816SX](#) (Mx-VB2(1)A-5-IR-VA, Mx-VB3(2)A-2-IR-VA, Mx-VD2(1)A-5-IR-VA, Mx-VD3(2)A-2-IR-VA, Mx-VB2A-2-IR, Mx-VD2A-2-IR)
3. [MxMOVE Release mb20240816YX](#) (Mx-SD2A-230-LL-VA, Mx-SD2A-230-LL-FM-VA, Mx-SD1A-540-IR-VA, Mx-SD1A-831-LIR-VA)
4. [MxMOVE Release mb20240823UX](#) (Mx-VB1A-8-IR-VA, Mx-VD1A-8-IR-VA, Mx-VH1A-12-IR-VA)
5. [MxMOVE Release mb20240823UX\\_8G\\_ALPR](#) (Mx-VB1A-2-IR-(VAX)-ALPR, Mx-VB1A-2-IR-D-(VAX)-ALPR)
6. [MxMOVE Release mb20240829TU](#) (Mx-VT1A-2-IR, Mx-VT1A-5-IR, Mx-VT1A-203-IR, Mx-VT1A-503-IR)
7. [MxMOVE Release mb20240830NX](#) (Mx-MD1A-5-IR)



### Easy integration into large and small video surveillance systems or standalone operation

The **MOBOTIX ONE M1A-S** camera can be easily integrated into **MxManagementCenter** (from 2.8.1), the **MOBOTIX Live App**, **MOBOTIX HUB** (with the new [MOBOTIX HUB Driver](#)) and the **MOBOTIX CLOUD** ("Direct to Cloud" support with future firmware release). Of course, all ONVIF-based VMS systems are also supported by the new MOBOTIX ONE platform. Thanks to the integrated complete video system (decentralized architecture), the camera can also be used as a local or mobile system solution.

As with all MOBOTIX IoT cameras, direct access to the **user interface of the camera firmware** is also possible via a standard web browser - without any additional devices or licenses. The current **MX-System Release firmware**, as well as all future updates, can be downloaded from the MOBOTIX website free of charge for life.

**MX-System Release 8.0.0.94 for all MOBOTIX ONE M1A-S cameras** (details and download): <https://www.mobotix.com/en/node/19640>





## 5.5 MX-System Release 7.3.5.22 only for c71 Kepler NurseAssist systems (Smart Sensor)

### Firmware update and new extended license for all MOBOTIX c71 NurseAssist sensors (powered by Kepler Vison Technologies)

The latest, free firmware version **exclusively for the c71 NurseAssist Smart Sensor** includes a performance update of the NurseAssist App and is mandatory for the use of the new **Kepler NurseAssist Extended App** (Mx-APP-KEP-NUA-EXT).

Important links:

- Firmware download: <https://www.mobotix.com/en/node/20420>
- Kepler NurseAssist App: <https://www.mobotix.com/en/node/19567>
- c71 NurseAssist website: <https://www.mobotix.com/en/mobotix-c71-nurseassist>



## 5.6 MOBOTIX LIVE App 2.7.3 for iOS

The MOBOTIX LIVE app iOS version 2.7.3 for iPhone and iPad has been available free of charge in the [App Store](#) since October 2, 2024. Use with iOS 18 is now fully possible.

A current Android version is available in the [Google Play Store](#).

### What do I need this app for?

The MOBOTIX LIVE APP allows you to access your MOBOTIX cameras and MOBOTIX door stations quickly and easily using your smartphone or tablet. Never miss a visitor again thanks to push notifications. MOBOTIX LIVE shows the doorbell message of a MOBOTIX IP video door station as well as live and playback views of MOBOTIX IoT cameras. Browse the latest events at the door station/camera in the playback view. View various live streams from cameras in the grid views, use the automatic camera search, live view, camera connection via SSL and display the connection status.



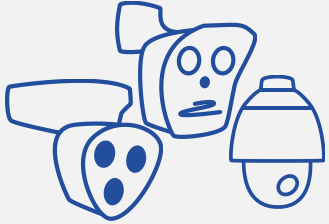
6.

# Important Links

# Important Links

---

## Products



[Overview of the entire MOBOTIX product range...](#)

## Software



[Download software, firmware, apps and driver packages...](#)

## Documentation



[Technical documentation, white papers, technical drawings and more...](#)

## Training courses



[Current dates for webinars, training courses and events...](#)

## Price list (only available for certified partners)



[Price list in the MOBOTIX Partner Portal, including ETIM and DATANORM catalog](#)

# Become part of the MOBOTIX community!

---



## MOBOTIX Community



### **The MOBOTIX Community - support around the clock**

Are you a MOBOTIX partner, customer, user or simply technically very interested in our innovative quality products such as the intelligent cameras "Made in Germany", MOBOTIX 7 camera apps with the latest AI technology or the modern VMS solutions such as MOBOTIX HUB or MOBOTIX CLOUD?

Visit our community platform now! Our technical support experts and experienced external users provide tips on setting up and using MOBOTIX solutions - and troubleshooting if necessary. In addition to a wealth of valuable technical information and tips, you can of course also exchange ideas with other members of the global MOBOTIX family in the user forum.

---

### Legal aspects of video and audio recording

When using MOBOTIX AG products, all data protection regulations for image and sound surveillance must be observed. Depending on national legislation and the installation location of the cameras, the recording of image and sound data may be subject to documentation requirements or prohibited. All users of MOBOTIX products are therefore required to familiarize themselves with the applicable regulations and to comply with them. MOBOTIX AG is not liable for any unlawful use of its products.

BeyondHumanVision

MOBOTIX

MOBOTIX AG  
Kaiserstrasse  
67722 Langmeil  
Germany

+49 6302 9816-0  
info@robotix.com  
www.robotix.com

MOBOTIX, the MOBOTIX Logo, MxControlCenter, MxEasy, MxPEG, MxDisplay and MxActivitySensor are trademarks of MOBOTIX AG registered in the European Union, the U.S.A. and in other countries • Subject to change without notice • MOBOTIX do not assume any liability for technical or editorial errors or omissions contained herein • All rights reserved • © MOBOTIX AG