

Interactive Navigator: Which VMS is the right one for me?

MxManagementCenter - MOBOTIX HUB - MOBOTIX CLOUD



VMS NAVIGATOR

VMS NAVIGATOR - The guide to the right MOBOTIX VMS solution

Instructions: This **interactive PDF file** contains questions with clickable answers. After clicking on an answer, you will be redirected to a new question until you finally receive a clear recommendation based on your individual answers or requirements.

MOBOTIX offers a wide range of solutions for the most diverse problems and scenarios. With our powerful **video management systems (VMS) MxManagementCenter, MOBOTIX HUB and MOBOTIX CLOUD**, we offer a complete range of options to successfully master the challenges of your project. Each individual project brings with it different requirements and problems. The VMS NAVIGATOR serves as a guide to help you find the right MOBOTIX VMS for your individual requirements with just a few clicks.

[Click here and start VMS NAVIGATOR >](#)

What is the focus of the solution in your project (select only one focus)?

- **Early fire detection & prevention** with thermal technology ([more info](#))
- **Kepler NurseAssist Healthcare solution** to improve the safety of people in need of care in their living environment (detecting falls, getting out of bed, etc., [more information](#))
- **License plate recognition (ALPR), access control and data evaluation**
- **Classic video security** (burglary, theft and perimeter protection)

Early fire detection &
prevention

Kepler NurseAssist /
Healthcare

License plate recognition,
access control and
evaluation

Classic video security

MN.04 - Cameras in use

Are you planning to use **only MOBOTIX IoT cameras** (e.g. M16, M73, P26, Q71 etc.) for your project or are you also using **MOBOTIX MOVE and ONVIF cameras from third-party providers**?

I **only** plan to use
MOBOTIX IoT cameras



I **also** plan to use **other**
cameras



MN.05 - Cameras in use

Are you planning to use **only MOBOTIX IoT cameras** (e.g. M16, M73, P26, Q71 etc.) for your project or are you also using **MOBOTIX MOVE and ONVIF cameras from third-party providers**?

**MOBOTIX IoT cameras
only**



**Also other cameras
(MOVE, third-party
providers)**



If MOBOTIX MOVE or ONVIF cameras from third-party providers are used in addition to MOBOTIX IOT cameras (Mx6/MOBOTIX 7/ONE):

- Is a **basic function** (live image without alarms and simple playback without event filter) sufficient? (free MxManagementCenter is sufficient)
- Or is **full VMS integration** of MOVE and third-party cameras required? (MOBOTIX HUB is recommended)

Basic function is sufficient

Full integration required

If MOBOTIX MOVE or ONVIF cameras from third-party providers are used in addition to MOBOTIX IOT cameras (Mx6/MOBOTIX 7/ONE):

- Is a **basic function** (live image without alarms and simple playback without event filter) sufficient? (free MxManagementCenter is sufficient)
- Or is **full VMS integration** of MOVE and third-party cameras required? (MOBOTIX HUB is recommended)

Basic function is sufficient

Full integration required

MN.08 - Number of cameras

With how **many cameras** is your project planned?

Less than 200 cameras

More than 200 cameras

With how **many cameras** is your project planned?

Less than 200 cameras

More than 200 cameras

What is the **main application focus** of your video system or which application scenario must be covered?

- **Search:** Focus is on the subsequent search of recordings (only occasional live image display); no simultaneous display of many cameras (>80) necessary
- **Comprehensive alarm handling:** with direct response by a user or possibly even a group of users; simultaneous connection of numerous/all cameras to a complex monitor wall.

Search instead of extensive
live monitoring

**Comprehensive alarm
handling**

What is the **main application focus** of your video system or which application scenario must be covered?

- **Search:** Focus is on the subsequent search of recordings (only occasional live image display); no simultaneous display of many cameras (>80) necessary
- **Comprehensive alarm handling:** with direct response by a user or possibly even a group of users; simultaneous connection of numerous/all cameras to a complex monitor wall.

Search instead of extensive
live monitoring

**Comprehensive alarm
handling**

Do you need a **larger number of PC workstations** (more than 10) for your project?

YES

NO

Do you need a **larger number of PC workstations** (more than 10) for your project?

YES

NO

As **the number of PC workstations increases**, the MxManagementCenter becomes very administration-intensive when configuration changes are made, as the decentralized approach rules out central administration of all workstations.

Would you like to keep MxManagementCenter in your selection?

YES, go on with
MxManagementCenter

NO, prefer **centralized**
management

As **the number of PC workstations increases**, the MxManagementCenter becomes very administration-intensive when configuration changes are made, as the decentralized approach rules out central administration of all workstations.

Would you like to keep MxManagementCenter in your selection?

YES, go on with
MxManagementCenter

NO, prefer **centralized**
management

Do you need **several cameras at different locations** for your project?

YES

NO

MN.17 - Cloud VMS Check

Is at least one of the following four questions relevant to your project?

1. Should the **administrative effort** (configuration, storage and data protection) of the many locations be **minimal**?
2. Should the **hardware** required on site be **reduced to a minimum**?
3. Should many users be able to **access it easily** via the Internet?
4. Do you prefer an **amortization advantage** of the ongoing storage and (possible) license costs with a simultaneous reduction of the initial investment?

If you **cannot** answer **YES** to **any** of these four questions, please **select NO**. You are then probably an experienced MxManagementCenter power user.

YES

NO, nothing relevant

Is at least one of the following four questions relevant to your project?

1. Should the **administrative effort** (configuration, storage and data protection) of the many locations be **minimal**?
2. Should the **hardware** required on site be **reduced to a minimum**?
3. Should many users be able to **access it easily** via the Internet?
4. Do you prefer an **amortization advantage** of the ongoing storage and (possible) license costs with a simultaneous reduction of the initial investment?

If you **cannot** answer **YES** to **any** of these four questions, please **select NO**. You are probably an experienced MxManagementCenter power user.

YES

NO, nothing relevant

MN.20 - Kepler NurseAssist

Should your project be used to **support nursing staff** in (elderly) care facilities or hospitals with a **MOBOTIX Kepler NurseAssist sensor solution** ([more information](#)) and optional connection or later expansion to existing systems such as access or building management?



Click YES if your video application also includes the monitoring and statistical evaluation of relevant situations in the patient room (optimized NurseAssist Dashboard shows and registers the status in each room: everything OK, detection of falls, person sitting on bed, entering bathroom, etc.).

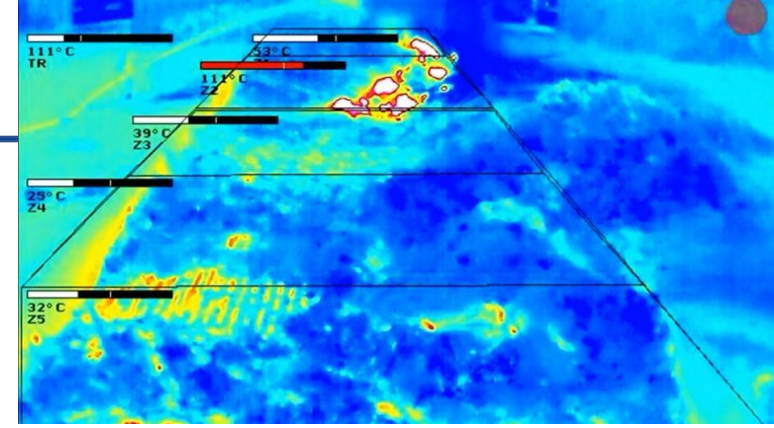
YES

NO, only classic video connection

MN.21 - Early fire detection (with MOBOTIX thermal cameras)

The most important selection criterion for **optimum early fire detection** is whether the detection of potential sources of fire

- a detached installation on a standard PC without deeper integration of integration of third-party systems or complex user management (**no connection to third-party systems**),
- or in combination with other, more complex video security systems such as access control, external alarm systems, control of extinguishing equipment, etc. (**system connection / integration**).



No third-party systems

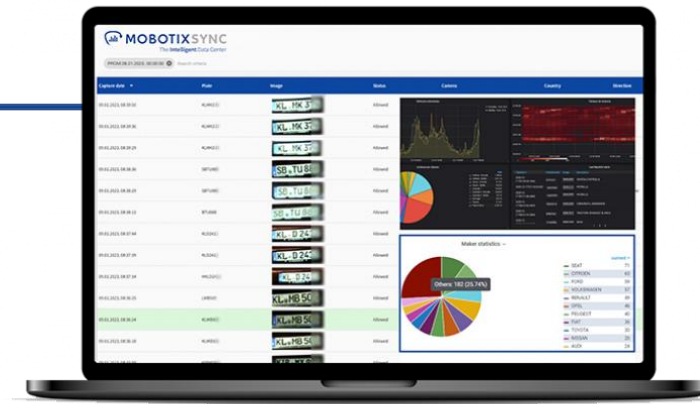
System connection /
integration

MN.22 - License plate recognition plus SYNC

Is the focus on your **license plate recognition**

- on the **forensic search**?
- Or should **additional relevant statistical data** be evaluated and be displayed in an **integrated dashboard** (e.g. distribution of vehicle brands in the customer parking lot today)?

Note: Dashboards with statistical data can be created with the [MOBOTIX SYNC Server](#). With the [MOBOTIX SYNC plug-in](#), these dashboards can also be conveniently integrated into the **MOBOTIX HUB** layout.



Focus: **forensic search**

Focus: **forensic search** plus **statistical data**
(dashboard integration)

MN.E1 - Recommendation: **MOBOTIX HUB**

The **optimum VMS** for your requirements is:

MOBOTIX HUB

Thank you for using the MOBOTIX VMS NAVIGATOR.
You are now just a few steps away from realizing your project.

Contact our qualified sales team for more information and to make your project a reality.



Contact MOBOTIX Sales Team

More info about
MOBOTIX HUB

Request a demo

Available trainings

VMS NAVIGATOR
restart

MN.E2 - Recommendation: **MOBOTIX CLOUD**

The **optimum VMS** for your requirements is:

MOBOTIX CLOUD

Thank you for using the MOBOTIX VMS NAVIGATOR.
You are now just a few steps away from realizing your project.

Contact our qualified sales team for more information and to make your project a reality.



Contact MOBOTIX Sales Team

More info about
MOBOTIX CLOUD

Request a demo

Available trainings

VMS NAVIGATOR
restart

MN.E3 - Recommendation: **MxManagementCenter**

The **optimal VMS** for your requirements is:

MxManagementCenter



Thank you for using the MOBOTIX VMS NAVIGATOR.
You are now just a few steps away from realizing your project.

Contact our qualified sales team for more information and to make your project a reality.

Contact MOBOTIX Sales Team

More information about
MxManagementCenter

Download software free of
charge

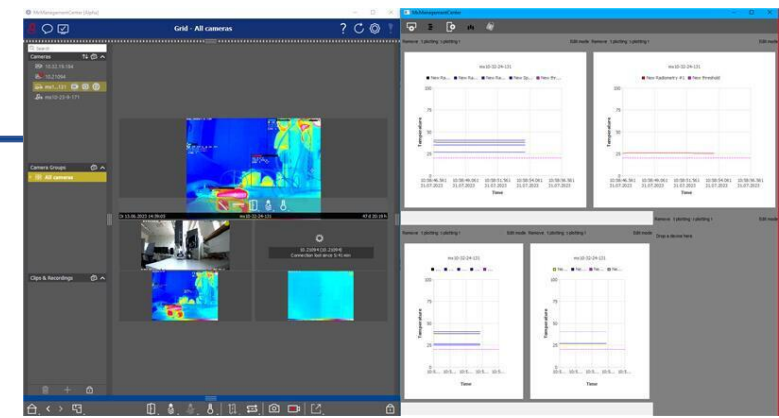
Available trainings

VMS NAVIGATOR
restart

MN.E4 - Recommendation: **MxManagementCenter + Thermal Dashboard**

The **optimum VMS** for your requirements is:

MxManagementCenter + Thermal Dashboard License



Thank you for using the MOBOTIX VMS NAVIGATOR.
You are now just a few steps away from realizing your project.

Contact our qualified sales team for more information and to make your project a reality.

Contact MOBOTIX Sales Team

More information about
MxManagementCenter

Request a demo

Available trainings

VMS NAVIGATOR
restart

BeyondHuman**Vision**

MOBOTIX

MOBOTIX AG
Kaiserstrasse
67722 Langmeil
Germany

+49 6302 9816-0
vertrieb@robotix.com
www.robotix.com

MOBOTIX, the MOBOTIX Logo, MxControlCenter, MxEasy, MxPEG, MxDisplay and MxActivitySensor are trademarks of MOBOTIX AG registered in the European Union, the U.S.A. and in other countries • Subject to change without notice • MOBOTIX do not assume any liability for technical or editorial errors or omissions contained herein • All rights reserved • © MOBOTIX AG