

In-ceiling mount Installation

The MOBOTIX MOVE Vandal Multisensor can be mounted on the wall with the accessory: Mx-M-VM-IC.

In-ceiling mount Mx-M-VM-IC 316x300x85 (mm); 0.965 kg. Metal: Aluminum Colour: White Supplied with one Cable Grommet, Ground Ring, M4 Screw for Ground Wire, RJ-45 insert tool, Security Torx	

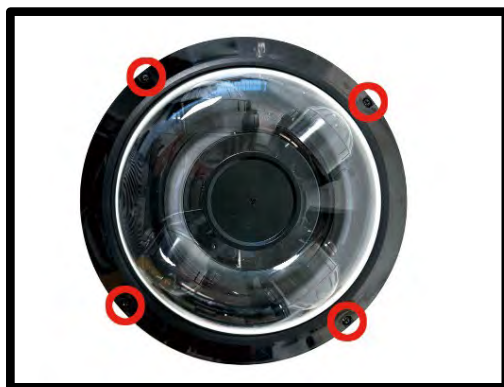
Tools / Installation Material required:

- Tool for drilling
- Ethernet Cable
- (+) Screwdriver
- Power Cable

Follow the steps below to install the camera with an In-ceiling mount.

STEP 1

Loosen the four security screws on the camera with the supplied security torx and open the dome cover.



STEP 2

Remove the desiccant and use a (+) screwdriver to loosen the connecting screws between the camera and the camera adapter plate.



STEP 3

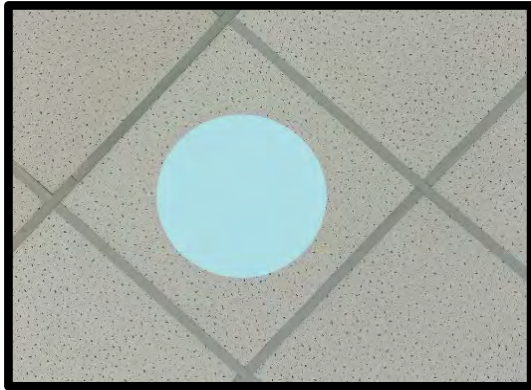
STEP 3:

Remove the anti-drop steel cable from the machine, and replace it with the anti-drop steel cable included in the In-Ceiling mount accessory package, using a crosshead screwdriver with a torque of $5.0 \pm 0.5 \text{ kg-f} \cdot \text{cm}$.



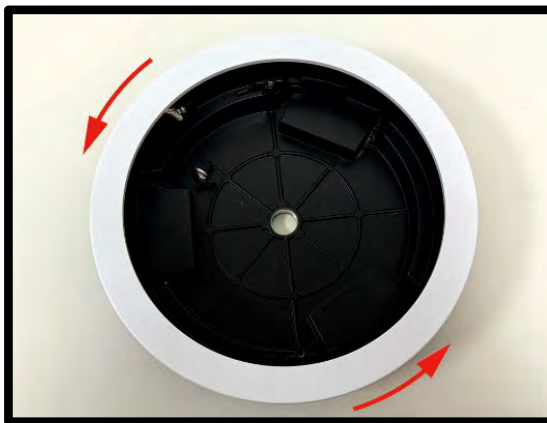
STEP 4

Place the Ceiling Sticker on the ceiling board and cut the circle part out of the ceiling.



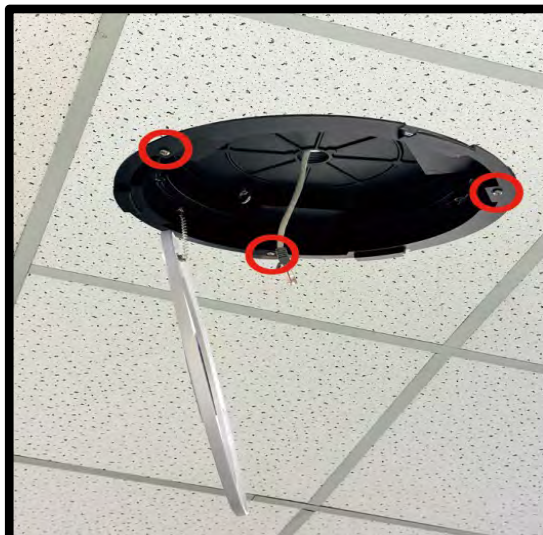
STEP 5

Rotate the white decorative cover of the In-Ceiling mount counterclockwise to open.



STEP 6

Then thread the Ethernet cable and other cables through the top cable management hole on the In-Ceiling mount and put up the In-Ceiling mount into the ceiling opening



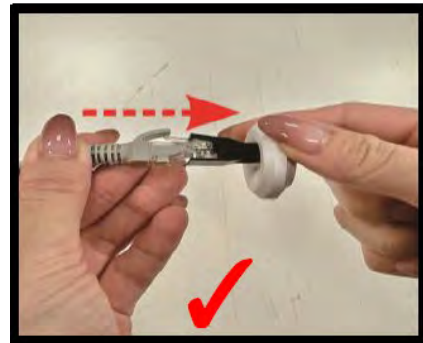
and fix it on the ceiling board by tightening the three screws indicated in the figure clockwise.

STEP 7

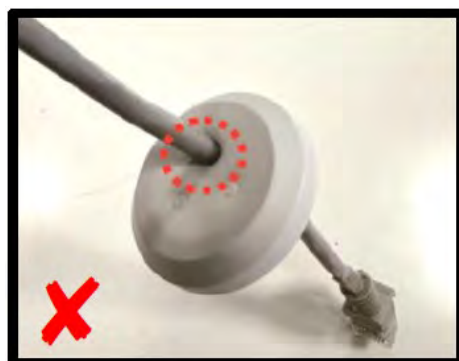
Put the insert tool on to the RJ-45 cable, puncture the cable grommet.



Please thread the Ethernet cable straight through the grommet. Otherwise, it may cause damage to the grommet.



After threading the Ethernet cable through the grommet, make sure to push the cable upward, causing the grommet to securely enclose it and create a reliable waterproof



seal.

STEP 8

Attach the anti-drop chain from the camera to the anti-drop ring on the In-Ceiling mount.



STEP 9

Connect the Ethernet cable to the RJ45 connector of the camera and insert the cable grommet into the camera's outlet hole. For power, alarm I/O and audio I/O connections, please refer to Users' Manual.

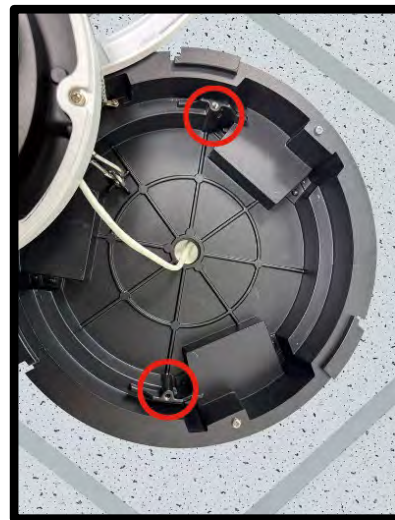
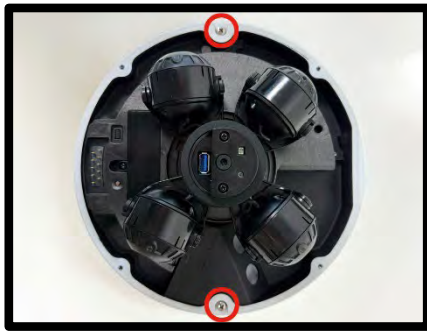
STEP 10

Attach the ground wire to the grounding ring and firmly secure it to the camera using an M4 screw. (Please refer to the diagram to determine the correct position for the grounding screw)



STEP 11

Use screws to secure the camera to the In-Ceiling mount. (Please refer to the diagram to determine the corresponding positions of the screws)



STEP 12

Adjust the pan / tilt / rotate / twist holders of the camera to point the lens at a suitable position for the desired camera view. Users can see the camera view by accessing the Camera Browser-viewer (refer to the User's Manual for further details).



NOTE

- Pan adjustment angle is nearly 360°, Tilt angle is adjustable between 0° ~ 95°, Rotate adjustment angle is between -90° ~ 90° and Twist adjustment angle is between -20° ~ 20°
- Users can also check the camera view via connecting a BNC monitor.
- If users connect the BNC cable for camera lens adjustment, be sure to disconnect it later, otherwise the dome cover cannot be installed.

STEP 13

Attach the dome cover to the camera and fasten the four security screws.



Note:

Align the camera's Pogo pins with the Pogo pins inside the camera's upper cover. (Please refer to the schematic diagram to determine the corresponding positions of the Pogo pins)



STEP 14

Screw on the white decorative cover of the In-Ceiling mount clockwise. And the In-Ceiling mount installation is completed.

